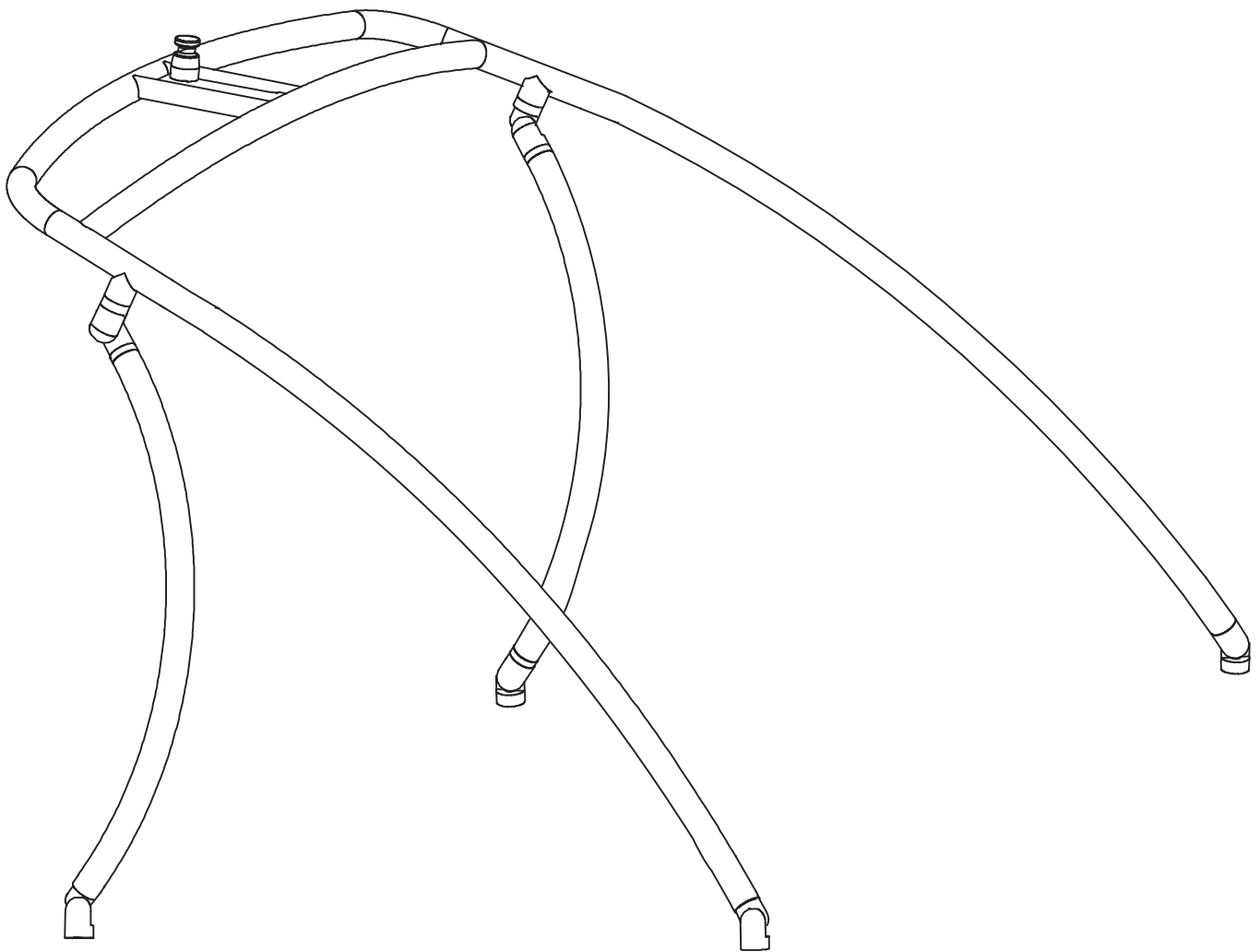


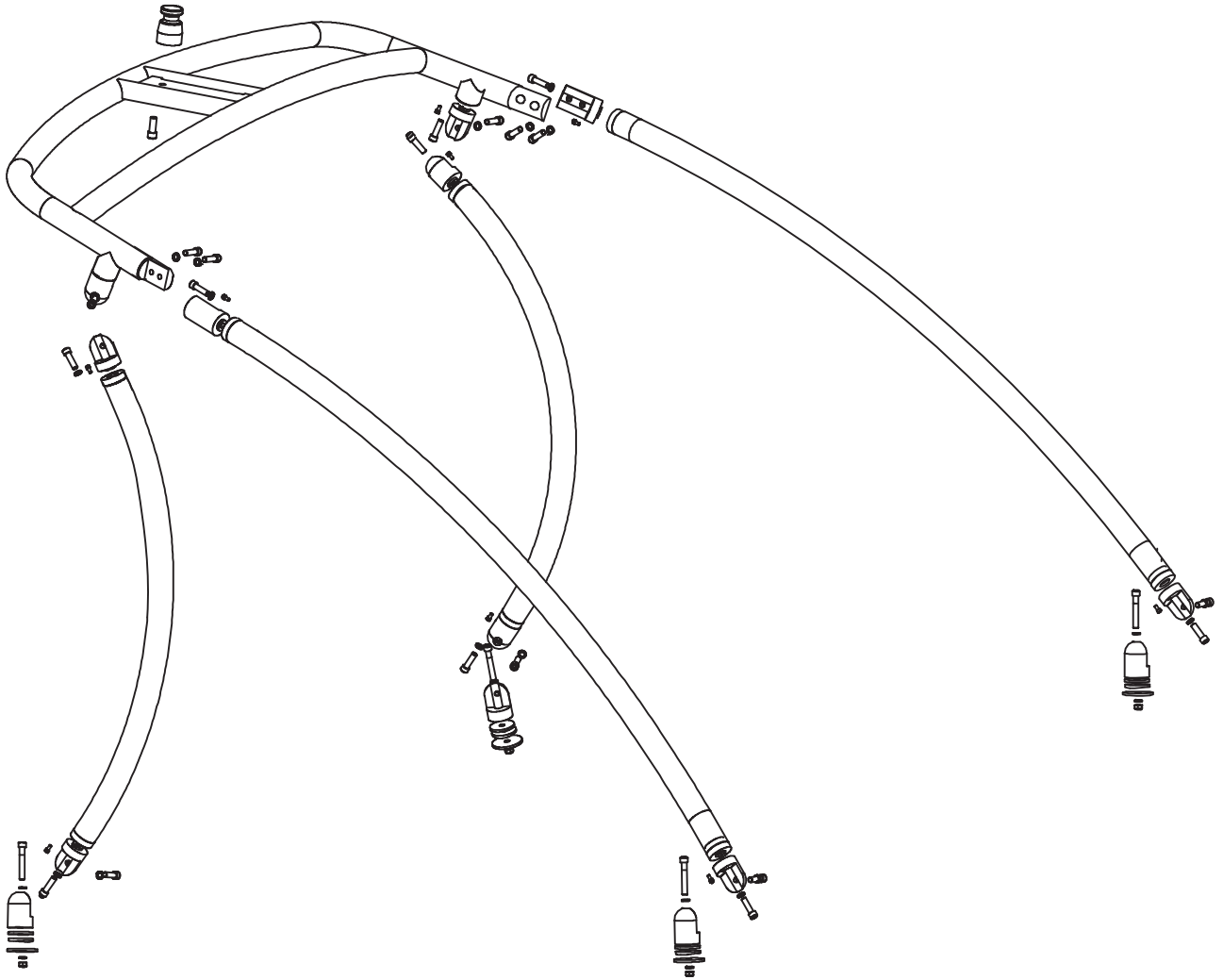


# INDY PRO WAKEBOARD TOWER



## INSTALLATION GUIDE

## EXPLODED VIEW



### STEP 1:

Unpack, check, and compare the contents of the box to parts list (next page).

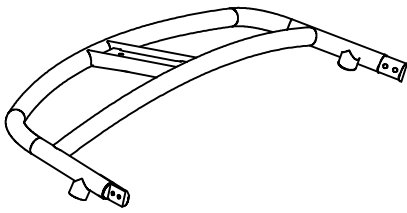
It is recommended to have the tower professionally installed for peace of mind.

Read the complete installation guide prior to installation.

If you are NOT sure of any part of this guide, or you have other questions, contact the distributor in your country, or contact Indy Wakeboard Towers directly.

Email: [indywakeboardtowers@gmail.com](mailto:indywakeboardtowers@gmail.com)

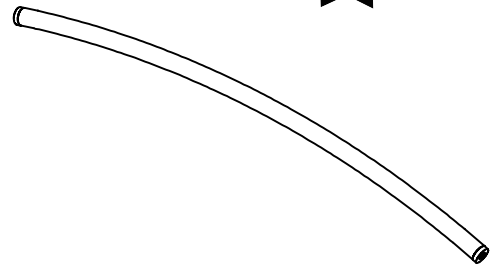
PARTS LIST



1 x Top Section



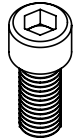
2 x Short Curved Rear Legs



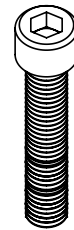
2 x Long Curved Front Legs



10 x M6 Bolts



20 x M12 Short Bolts



4 x M12 Long Bolts



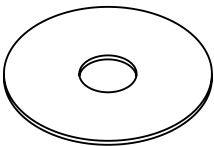
24 x Split Washers



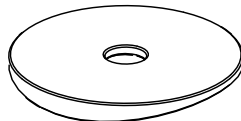
4 x small Nylon washer



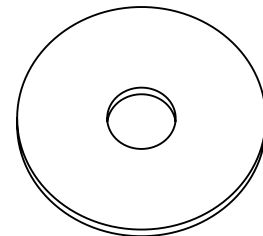
4 x Locking Nut



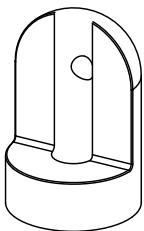
4 x Large Nylon Plates



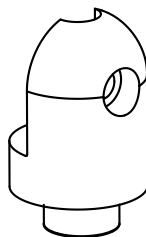
4 x Curved Rubber spacers



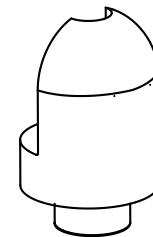
4 x Large 70mm Alloy plates



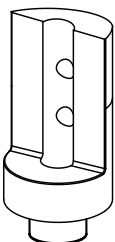
4 x Flat Base Deck Mounts



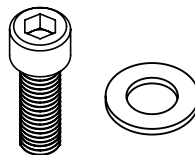
6 x Open Hole leg fittings



2 x Threaded hole fittings



2 x Square front Leg fittings



1 x Tow Point Bolt and Washer



1 x Tow Point

## Step 2: Attaching end fittings to long curved front legs



Note: The front legs use two different end fittings:

Note: The square shape fitting is used to attach to the top section

Note: The rounded fitting with an open hole is used to attach to the deck mounts

Attach the Square fitting to only one end of the front leg.

Note: the square shape fitting has two threaded holes for attaching to top section

Note: the base of has a raised circle area

Note: the end of the tower leg has a counter sunk circle with internal thread

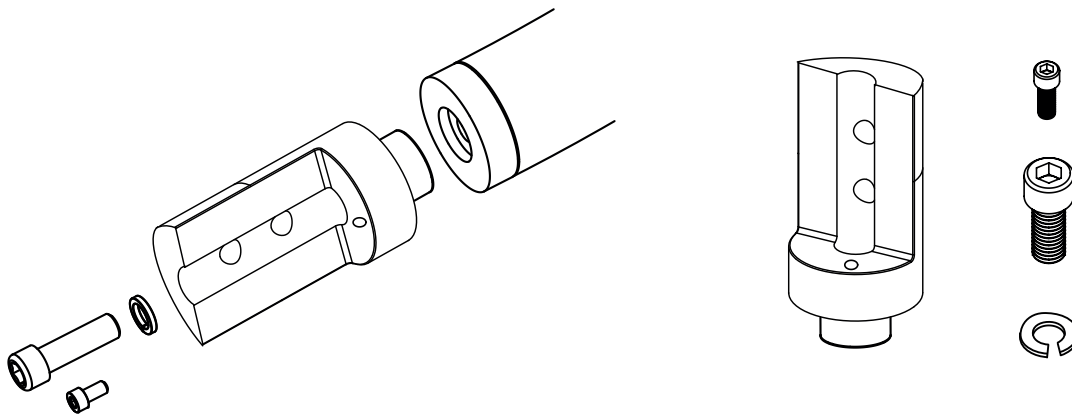
Insert the raised circle base of the fitting into the counter sunk area of the leg end.

Use the M12 bolt and split washer inserted through the centre and tighten.

Note: you can still rotate the fitting at this time

Use the small M6 bolt in the small threaded hole to lock the fitting from rotating.

Allow the fitting to rotate slightly for adjustment at this time.



Attach the curved fitting to the opposite end of the front leg. This end fitting will attach to the threaded deck mounts.

Note: the curve shape fitting has an open hole through the side to attach to the threaded deck mount

Note: the base of has a raised circle area

Note: the end of the tower leg has a counter sunk circle with internal thread

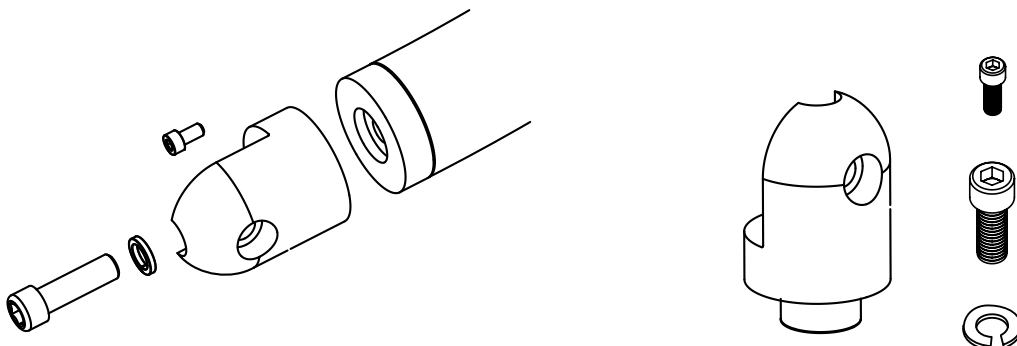
Insert the raised circle base of the fitting into the counter sunk area of the leg end.

Use the M12 bolt and split washer inserted through the centre and tighten.

Note: you can rotate the fitting at this time

Use the small M6 bolt in the small threaded hole to lock the fitting from rotating.

Allow the fitting to rotate slightly for adjustment at this time.



### Step 3A: Attaching end fittings to short curved rear legs



Rounded end fitting with an open hole are attached to both ends of the rear legs.

Note: the curved shape fitting has an open hole for attaching to threaded deck mounts and top

Note: the base of has a raised circle area

Note: the end of the tower legs has a counter sunk circle with internal thread

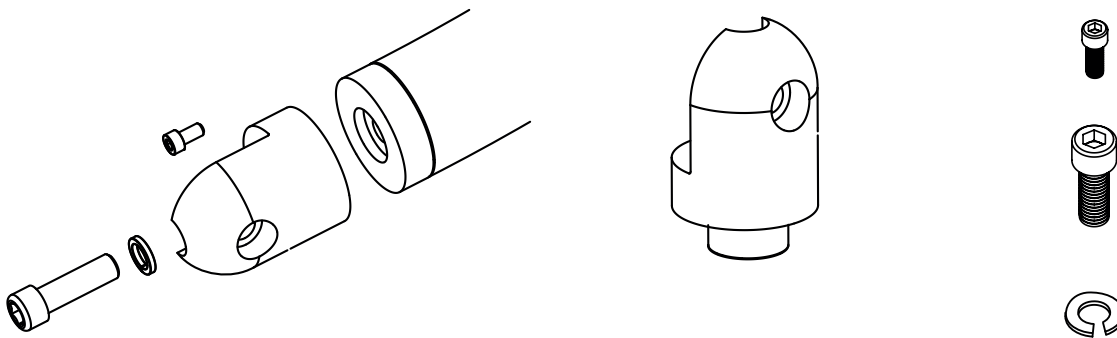
Insert the raised circle base of the fitting into the counter sunk area of the leg end

Use the M12 bolt and split washer inserted through the centre and tighten

Note: you can rotate the fitting at this time

Use the small M6 bolt in the small threaded hole to lock the fitting from rotating

Allow the fitting to rotate slightly for adjustment at this time.



### Step 3B: Attaching fittings to top section

Rounded end fitting with a threaded hole

Note: the curved shape fitting has an threaded hole for attaching to the open hole end fittings on rear leg

Note: the base of has a raised circle area

Note: the tower top section has a short welded flat fitting with a counter sunk circle area with a thread

Insert the raised circle base of the fitting into the counter sunk area of the top section

Use the M12 bolt and split washer inserted through the centre and tighten

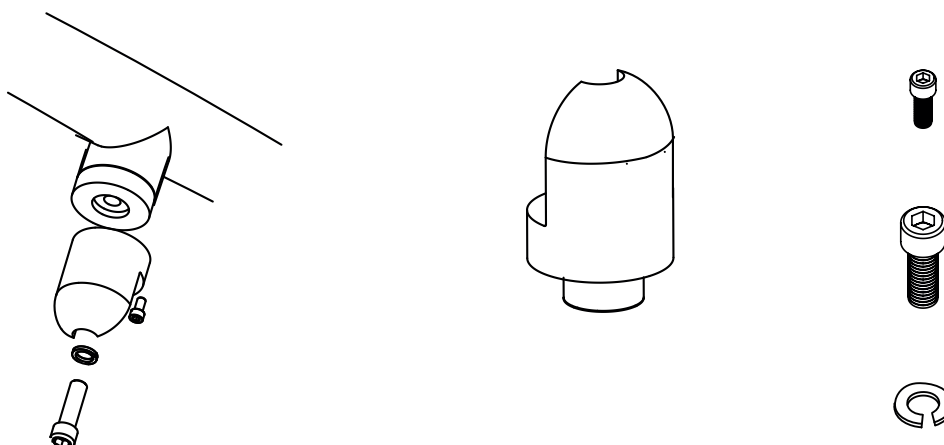
Note: you can rotate the fitting at this time

Rotate the fitting so the flat area with the threaded hole faces inwards

Use the small M6 bolt in the small threaded hole to lock the fitting from rotating

Allow the fitting to rotate slightly for adjustment at this time.

Align the fitting to to run parallel to the top section tube



#### Step 4: Attaching tow point to top section

The tow point section has a contoured shape with a flat base and threaded hole.

Note: the nice curves of the top section that allow your wakeboard rope to move freely

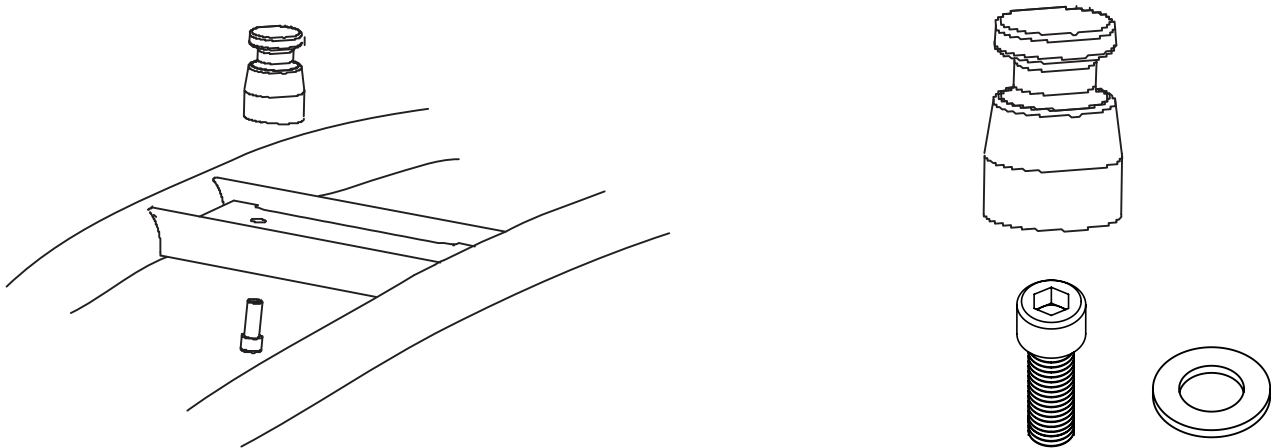
Note: the threaded hole in the base

Note: the flat welded plate on the top section between the two bars with a pre-drilled hole

Note: the indy badge on the tower top section

Place the tow point on the top of the flat plate of the top section.

Insert bolt with large washer underneath the flat alloy plate and tighten into the tow point.



#### Step 5: Attach the long curved front legs to the top section

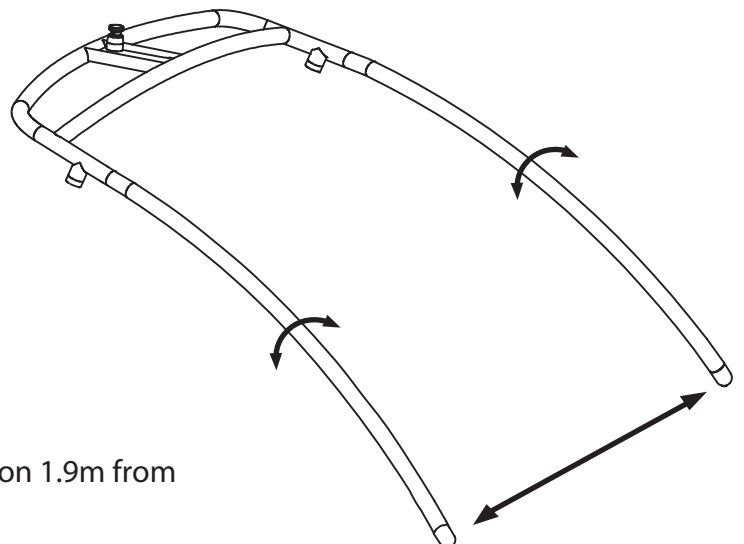
Place the top section on the floor so you can read the logo.

Attach the long curved front legs to the top section. Note the square end fittings with two holes; attach the square end fitting on the legs to the top section.

Note: the front legs should create an arc towards the floor.

Note: you should be able to rotate the legs slightly which will move the front mounting points wider and narrower.

NOTE: You can now measure where the mount will be on the front deck, and adjust the legs to see what the tower will look like from the front of the boat before drilling any holes.



NOTE: You can also attach the rear legs and position 1.9m from the front and adjust to see how the tower looks.

## Step 6A: Assembly of deck mounts



Note: Flat base of fitting

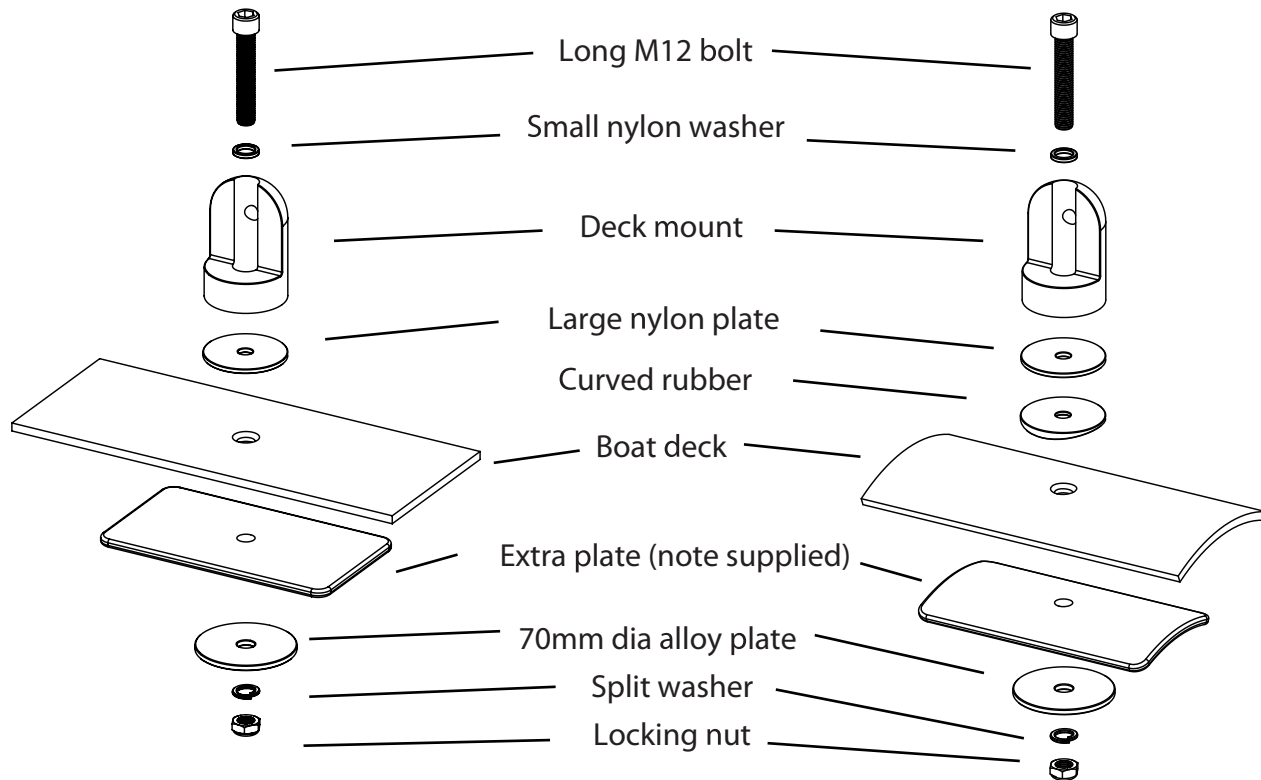
Note: The M12 hole through the centre

Note: The threaded hole in the fitting

Note: Curved rubber inserts are only used on curved decks between the deck and nylon plate.

Flat deck assembly

Curved deck assembly



## Step 6B: Installation of front deck mounts onto boat

Note: distance between front mounts (65inch - 95inch) 165cm - 240cm

Note: Recommended that front deck mounts are placed on the flat surface in front of the windscreen. Use extra plate of (plywood or alloy) underneath the deck between the our alloy plate supplied and the deck of the boat (see picture above)

**WARNING:** Before drilling into your boat, PLEASE check that you have clear access to the area beneath, and that no objects, wires, or other hazards are present.

**TIP:** Do not measure from windscreen, cleats, or vents. These reference points are not always square and in the same position as the opposite side of the boat.

It's best to use the front of the boat as the reference point, the top edge of the deck mould, or similar measurement points whenever possible. Always triple-measure and check before drilling

Tighten the deck mounts firmly so that the mounts will rotate under pressure while turning the mount with the leg attached (note the mounts will be very hard to rotate by hand).

## Step 6C: Attaching the rear deck mounts to the boat



Note: distance between rear mounts (side to side) 65inch to 95inch (165cm to 240cm) Wide

Note: distance from front to rear mounts 75inch (1.9m) recommended (1.7m to 2.1m acceptable range)

Note: you have two options read both options to decide

### Option 1

Go to Step 7 and follow process and return to Step 6

### Option 2

Measure back from front deck mounts 1.9m, or distance the acceptable range mentioned above.

Mark the position of rear deck mount. Repeat on other side.

Triple-measure, drill, and install deck mounts.

The hull mounts may be located on the top, or the side, of the boat hull based on your preference.

**WARNING:** Check underneath the deck before drilling for objects, wires, triple-check.

## Step 7: Attaching and checking the rear deck mount position and look of tower from the side

Measure the distance between the FRONT deck mounts, you have installed on boat.

Adjust the front legs on the assembled tower on the floor.

Lift the tower onto the boat and attach the front legs to the deck mounts.

Adjust the rear legs by rotating inwards, forwards, and backwards to the desired position.

Stand back from the side and rear to check the tower shape and lines with the boat.

Mark the rear mounting position.

Note: do one side at a time, then measure and mark other side, and then attach the deck mounts to the rear of the boat.

## Step 8: Attach the tower to all deck mounts

Check that the tower is in-line and square; look from the front, sides, and rear.

Check to assure the top section is level and tow point centred.

Note: by rotating the front legs you can adjust the alignment of the top section

Note: you can also adjust the rear leg shapes to adjust the alignment

Note: you can also rotate the fitting on the top section of the rear legs to adjust the rear leg

Once you have the tower square and in position, mark across every joint as a reference.

REMOVE one leg at a time whilst tower is attached to the boat (mark across joint for alignment)

Place lock tight on the surface of fitting and end of tubes where they meet.

Place lock tight on the M12 and M6 bolt.

Line up the reference mark you made and lock the centre M12 bolt first, then the small M6 set bolt.

REPEAT the process on all fittings on the tower.

**FOR LOWERING & RAISING watch video at [www.indywakeboardtowers.com](http://www.indywakeboardtowers.com)**



## CARE AND MAINTENANCE

Be sure to check and tighten all fasteners and connections prior to every use

Be cautious when towing or driving under obstacles, low hanging structures or trees

Leave tower in the erect position when towing behind a vehicle

Use soap and water to clean your tower. Avoid abraasive material that might scratch or damage the tower protective finish.

Always rinse and wipe down tower after contact with salt (brackish) water.

## WARRANTY

Indy warrants this product (not including other 3rd party accessories) against manufactures defects.

Claims can be filed by contacting Indy, or your Indy distributor. The defective product/part may be sent to the distributor for inspection, where it will either be repaired or replaced (unless otherwise agreed in writing). The customer is liable all for costs associated in shipping the product/part to Indy.

Indy is not responsible for personal injury or damage to the boat caused by the use of the tower or any transport charges, cost of installation, or removal of the tower. Indy is not liability for direct, indirect, or consequential damages resulting from delay, or improper installation.

Warranty specifically excludes anodised, polished, powder coated surfaces, or hardware corrosion as their care and use can not be controlled by Indy.

Warranty does not cover the spider coat gel cracking, damage from the installation, or use of the tower on your boat. No dealer, retailer, or manufacturer is the agent of James G Pty Ltd, and may not assume any liability in connection with this warranty. This warranty is in lieu of all.

## WARNING

The construction of your boat, design of the deck, thickness of deck and walls, and overall design may cause movement at the mounting points.

If the construction of you boat causes movement at the mounting points, or incorrect mounting location creates added pressure on joints increasing movement of the tower; the warranty is voided.

**NOTE:** If in doubt do not install the tower.

Check all bolts and parts prior to use, especially after towing behind a vehicle, lowering and raising after storage.

**WARNING:** Do not stand, climb or jump off tower, do not tow a boat behind a vehicle with the tower lowered. Do not tow tubes, boats, or other watercraft from the tower. Watch out whilst moving under objects, such as bridges, low building, and trees.

[www.indywakeboardtowers.com](http://www.indywakeboardtowers.com)